

BENTONVILLE MARCHING INVITATIONAL

Traveling In from the SOUTH

I-49 Exit 85 – Walton Blvd head West (Hwy 71B) to SE J Street and turn North

Traveling In from the NORTH

I-49 Exit 86 – SE 14th Street head West (Hwy 102) to SE J Street and turn South

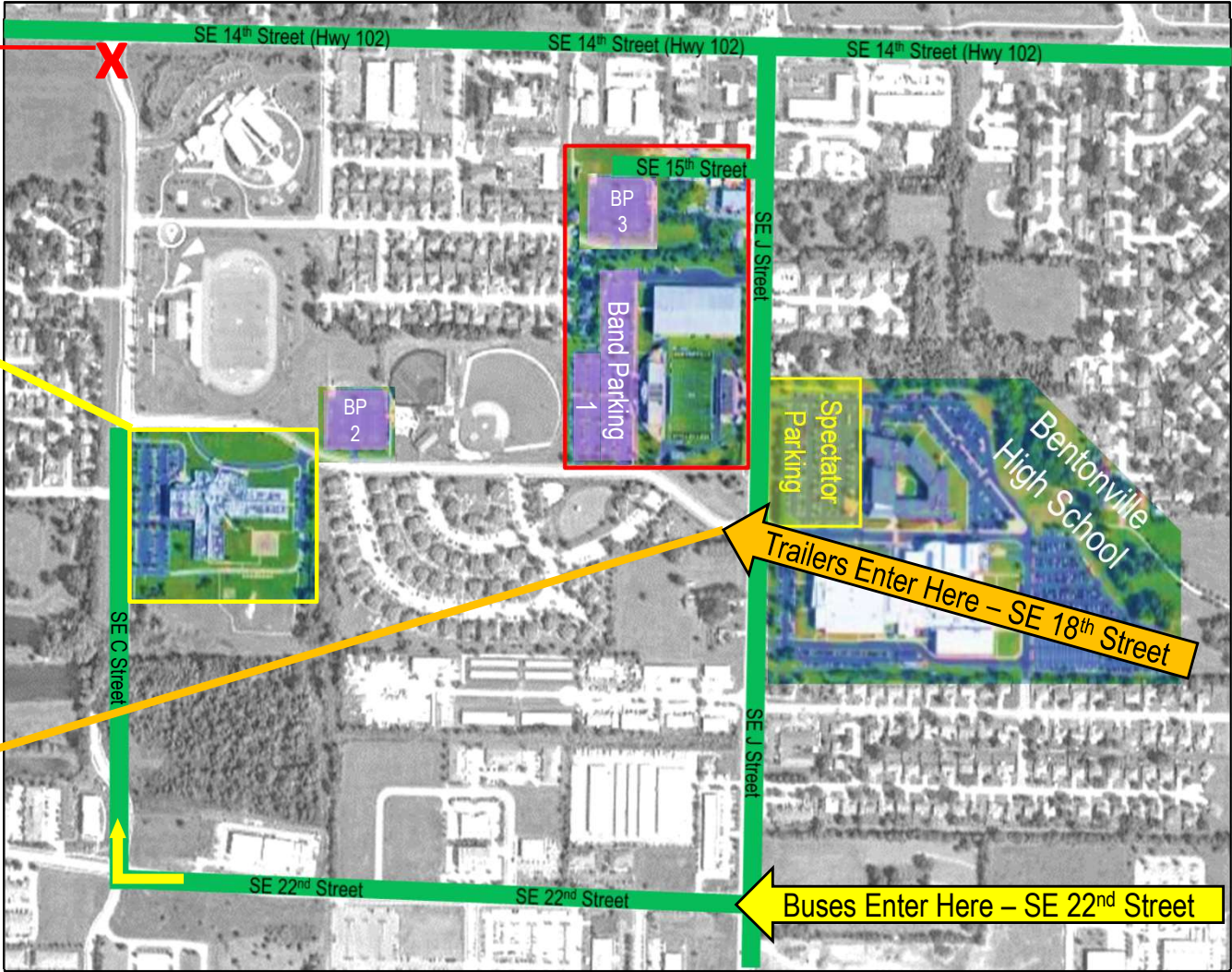
Do not turn onto SE C Street from SE 14th Street
Buses and Trailers will not fit

Bus Check-In Location
Ruth Barker Middle School
500 SE 18th Street – Bentonville, AR

- Travel to SE J Street
- Turn West on SE 22nd Street
- Turn North on SE C Street

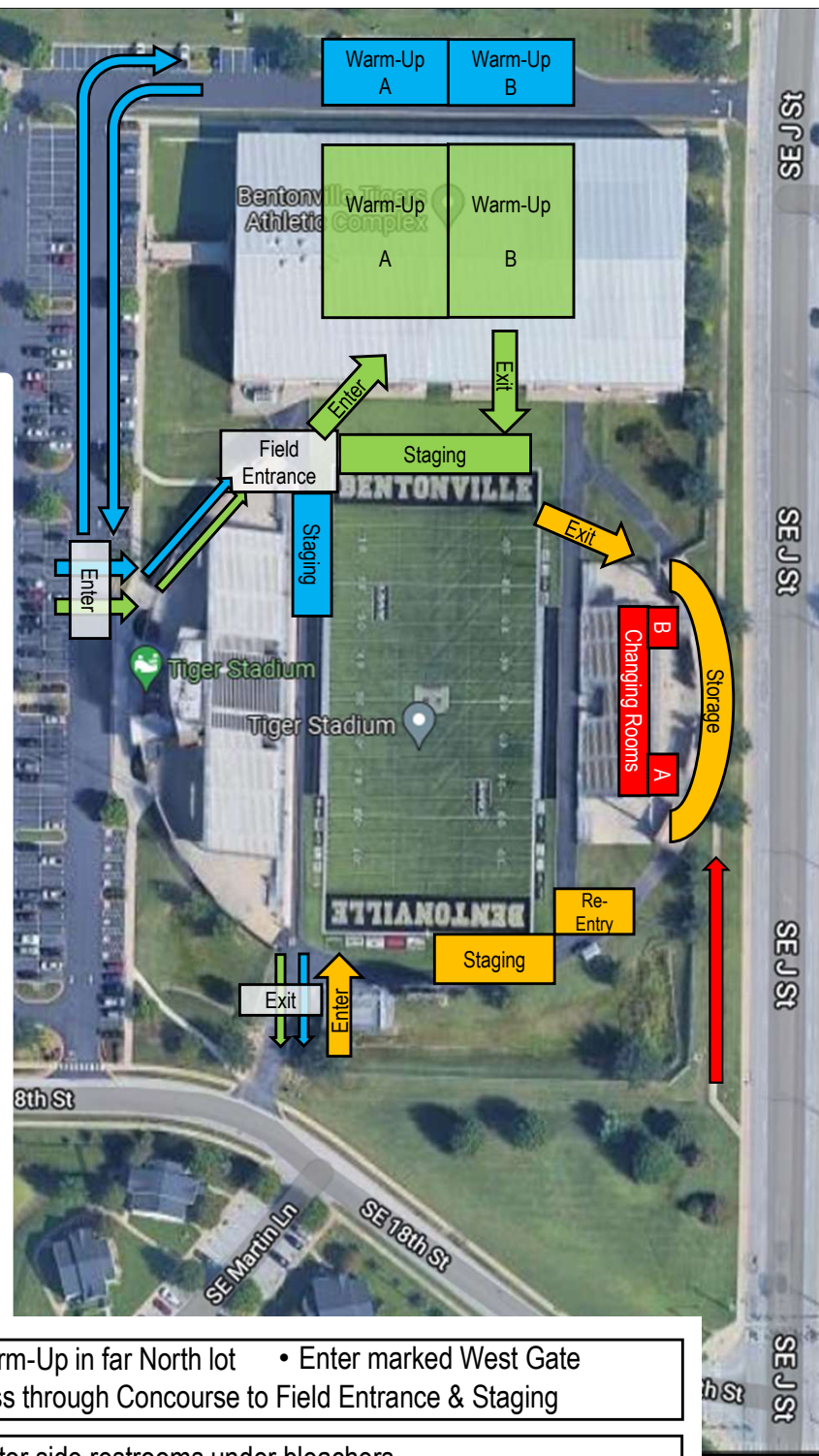
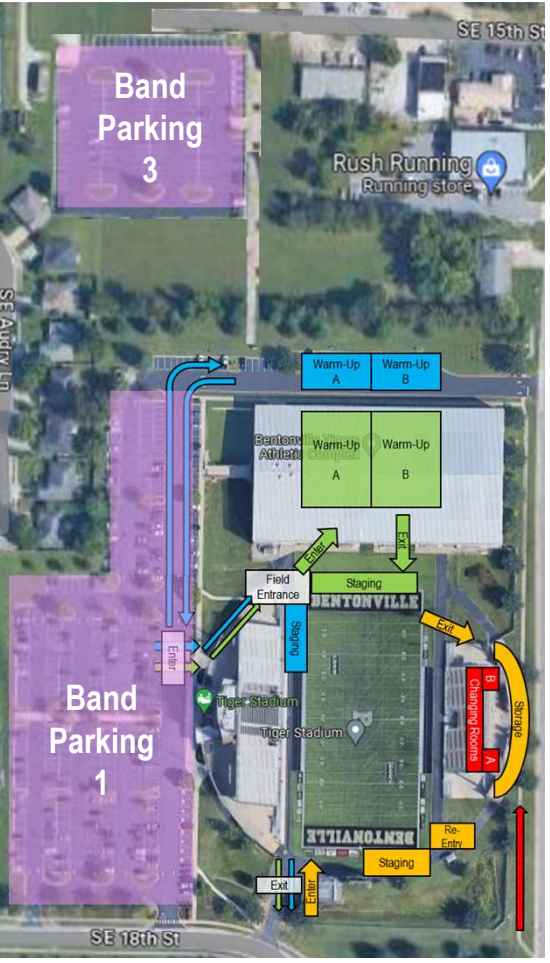
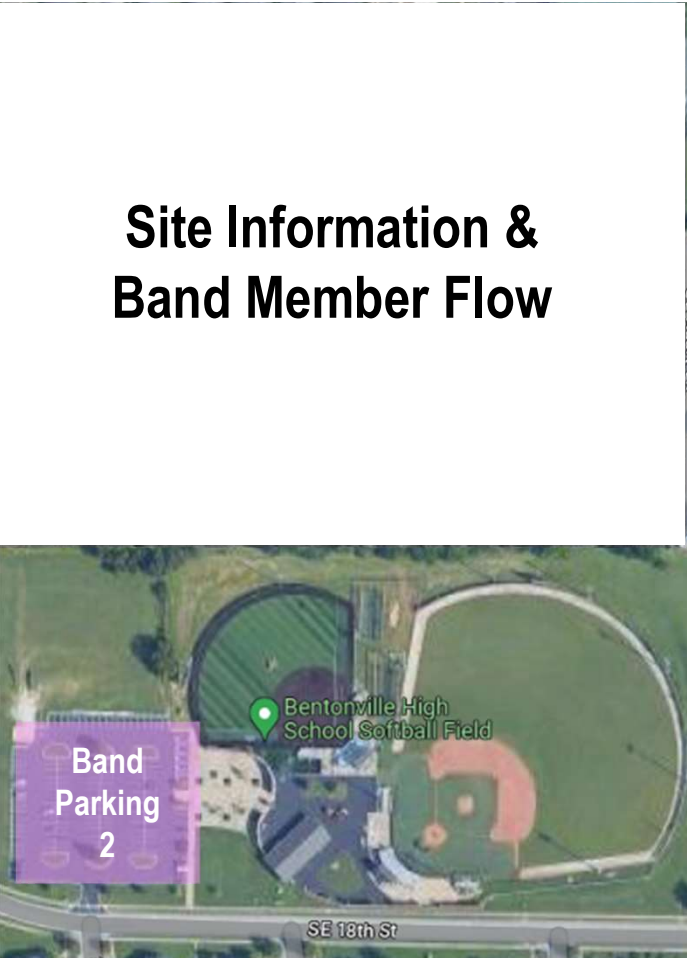
Equipment Trucks, Trailers

- Travel to SE J Street
- Turn West on SE 18th Street
- Just South of Tiger Stadium



BENTONVILLE MARCHING INVITATIONAL

Site Information & Band Member Flow

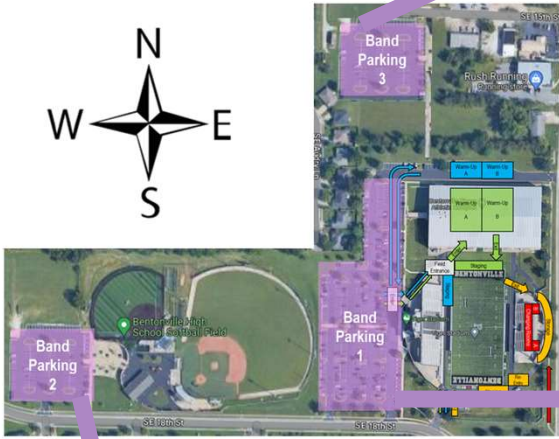


Props	<ul style="list-style-type: none"> • Enter from South • Staged on South end 	<ul style="list-style-type: none"> • Exit to North • Post-Prelim storage available 	Battery - Front Ends	<ul style="list-style-type: none"> • Warm-Up in far North lot • Enter marked West Gate • Pass through Concourse to Field Entrance & Staging
Band & Guard	<ul style="list-style-type: none"> • Enter marked West Gate • Pass through Concourse to Warm-Up Area, then Staging 	<ul style="list-style-type: none"> • Exit to South 	Changing Rooms	<ul style="list-style-type: none"> • Visitor side restrooms under bleachers • Two Men's & Women's locations available marked A & B

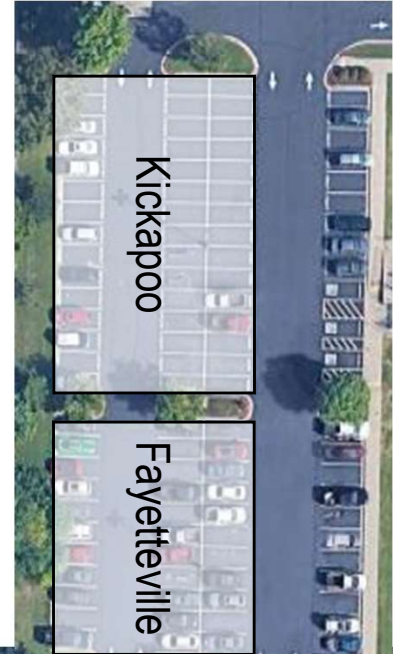
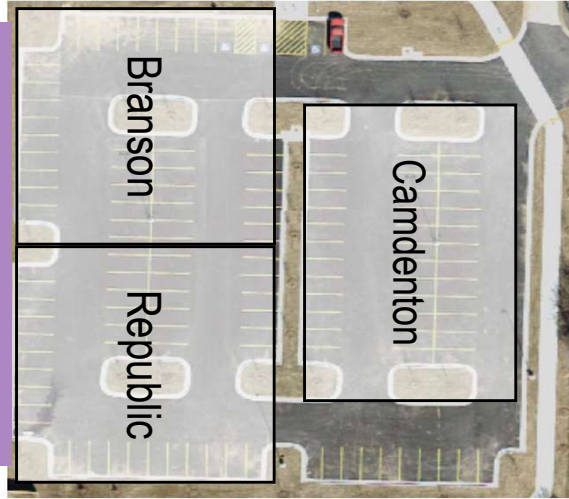
BENTONVILLE MARCHING INVITATIONAL

Parking Overview

See Event and Traffic Flow Maps for specific lot location



Band Parking 3



Band Parking 1



Band Parking 2

